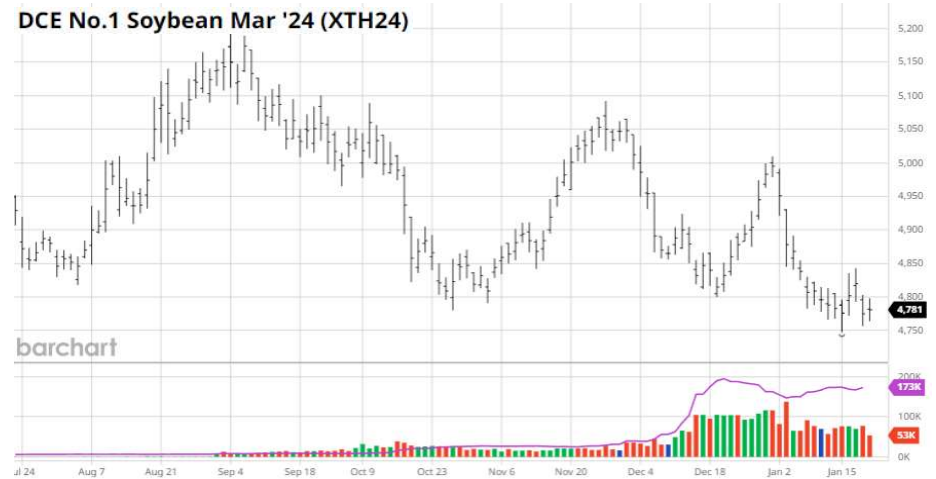
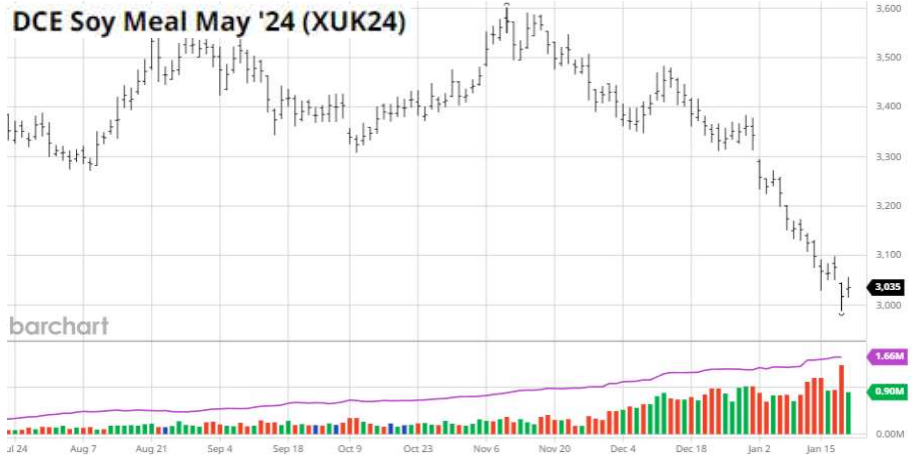


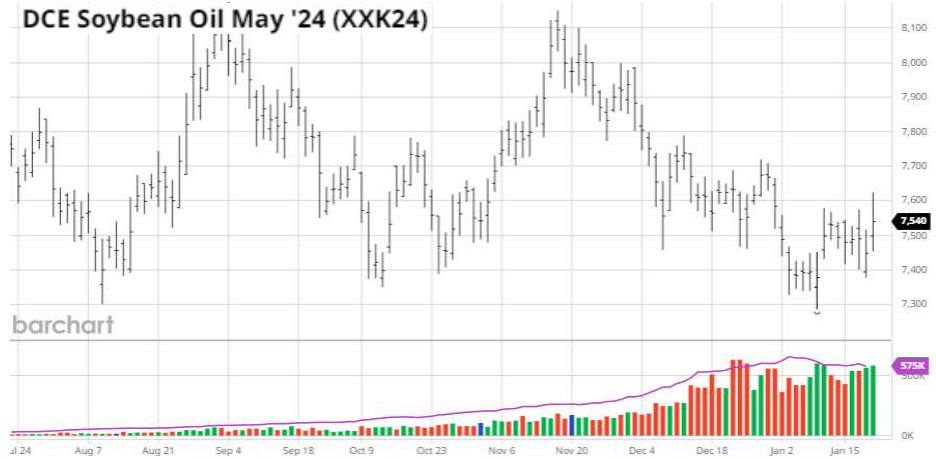
Weekly Net Changes for Dalian Corn Futures										
Cont. Yr/Mnth	Open	High	Low	Close	Settle	Chg	Volume	OI	OI Chg	
c2401	0	0	0	2,403	2,403	68	1,000	0	-1,000	
c2403	2,353	2,370	2,304	2,311	2,319	-48	291,599	203,482	-30,795	\$8.58
c2405	2,379	2,393	2,331	2,343	2,352	-46	2,405,342	883,759	142,374	-1.96%
c2407	2,410	2,412	2,361	2,374	2,380	-32	315,621	251,791	41,990	
c2409	2,399	2,416	2,379	2,383	2,388	-21	103,879	104,579	13,995	
Corn Totals	-	-	-	-	-	-	3,139,494	1,462,549	170,459	



Weekly Net Changes for Dalian Soybean Futures										
Cont. Yr/Mnth	Open	High	Low	Close	Settle	Chg	Volume	OI	OI Chg	
a2401	0	0	0	4,793	4,793	36	0	0	-10	\$18.33
a2403	4,788	4,843	4,748	4,780	4,781	-3	348,567	170,128	-2,994	-0.06%
a2405	4,759	4,810	4,727	4,759	4,761	1	83,056	46,899	2,716	
a2407	4,713	4,759	4,676	4,681	4,684	-32	18,637	17,072	6,742	
a2409	4,701	4,740	4,658	4,663	4,667	-39	7,721	8,912	1,303	
Soybeans Total	-	-	-	-	-	-	458,384	243,413	7,961	



Weekly Net Changes for Dalian Soymeal Futures										
Cont. Yr/Mnth	Open	High	Low	Close	Settle	Chg	Volume	OI	OI Chg	
m2401	0	0	0	3,771	3,771	137	0	0	-90	
m2403	3,333	3,365	3,134	3,177	3,177	-177	554,719	101,414	-48,089	\$480.72
m2405	3,078	3,098	2,988	3,037	3,035	-61	5,475,678	1,646,722	55,152	-2.01%
m2407	3,084	3,096	2,990	3,036	3,032	-61	255,725	213,378	-42,661	
m2409	3,163	3,172	3,064	3,108	3,102	-68	731,088	554,889	49,279	
Soymeal Total	-	-	-	-	-	-	7,127,778	2,624,679	22,247	



Weekly Net Changes for Dalian Soyoil Futures										
Cont. Yr/Mnth	Open	High	Low	Close	Settle	Chg	Volume	OI	OI Chg	
y2401	0	0	0	7,796	7,796	0	0	0	-933	
y2403	7,778	7,876	7,634	7,870	7,806	112	31,790	19,222	-3,761	\$0.50
y2405	7,538	7,624	7,378	7,612	7,540	118	2,567,671	580,024	-5,958	1.56%
y2407	7,446	7,530	7,320	7,512	7,460	72	20,024	25,665	-2,059	
y2409	7,406	7,456	7,258	7,446	7,400	70	254,384	97,191	22,769	
Soyoil Total	-	-	-	-	-	-	2,883,199	740,371	10,341	

1 US \$ = 7.1165 Charts reflect 3:00PM (1:00AM CST) Beijing Settlement; Close in Data Table reflects extended hours 11:30PM (9:30 AM CST)

Dalian Corn does not have extended trading hours; Weekly % (+/-) reflective of settlement price

Green Box = CBOT \$ Equivalent for DCE Lead Contract